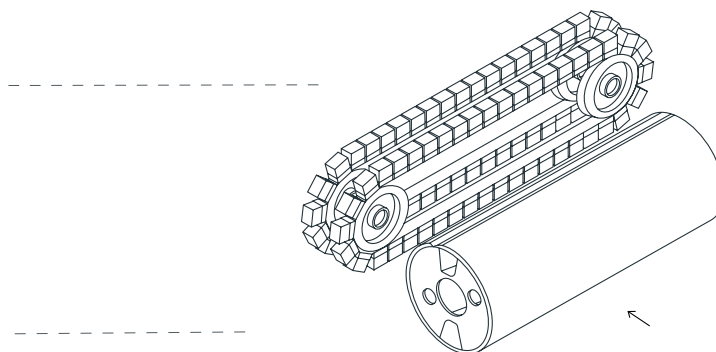


DM1100 DC EVO

/ SLAG REMOVAL



DEMONSTRATION VIDEO



OVERVIEW

__ Ø435mm large diameter deburring drum with extra soft rubber 20 SH for big burrs and thick material

__ Ideal for thick and heavy steel parts. Concentrates the pressure on the edges where the burr is located, leaving the surface of the material lightly touched only

__ Two cross belts mounted with abrasive blocks running in opposite directions, completing edge rounding on the complete area of the part

__ Automatic thickness measurement

TECHNICAL SPECIFICATIONS

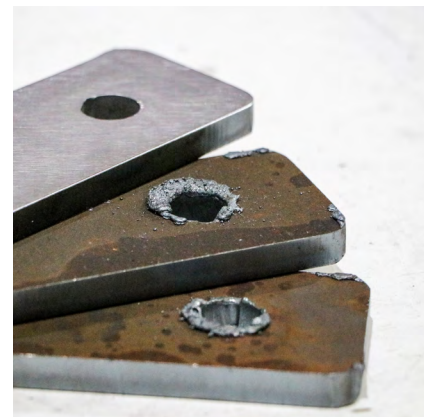
working capacity (mm)	1100x120
feeding speed (m/min)	0.5-4
drum speed (rpm)	180-650
crossbelt speed (m/s)	2-8
total power (kW)	19
abrasive dimensions (mm)	1150x1520
drum + crossbelt motor (kW)	11 + 3 (2x)
consumption (A)	43
dimensions (mm)	2860x2150x2270
weight (kg)	4230



__ heavy burrs deburring and edge rounding



__ possibility of regulating which stations will work and at what speed, the working pressure for both stations, floating drum on/off and drum oscillation



__ smooth edges two cross belts mounted with abrasive blocks running in opposite directions